

MASKING AT WORK



Masks are no longer required, but strongly recommended for:

- Indoor public settings
- Indoors with people who are at high risk of severe illness
- Indoors or in crowded outdoor settings for people at high risk of severe illness, or who live with someone who is at high risk

You must wear a mask, regardless of vaccination status, at:

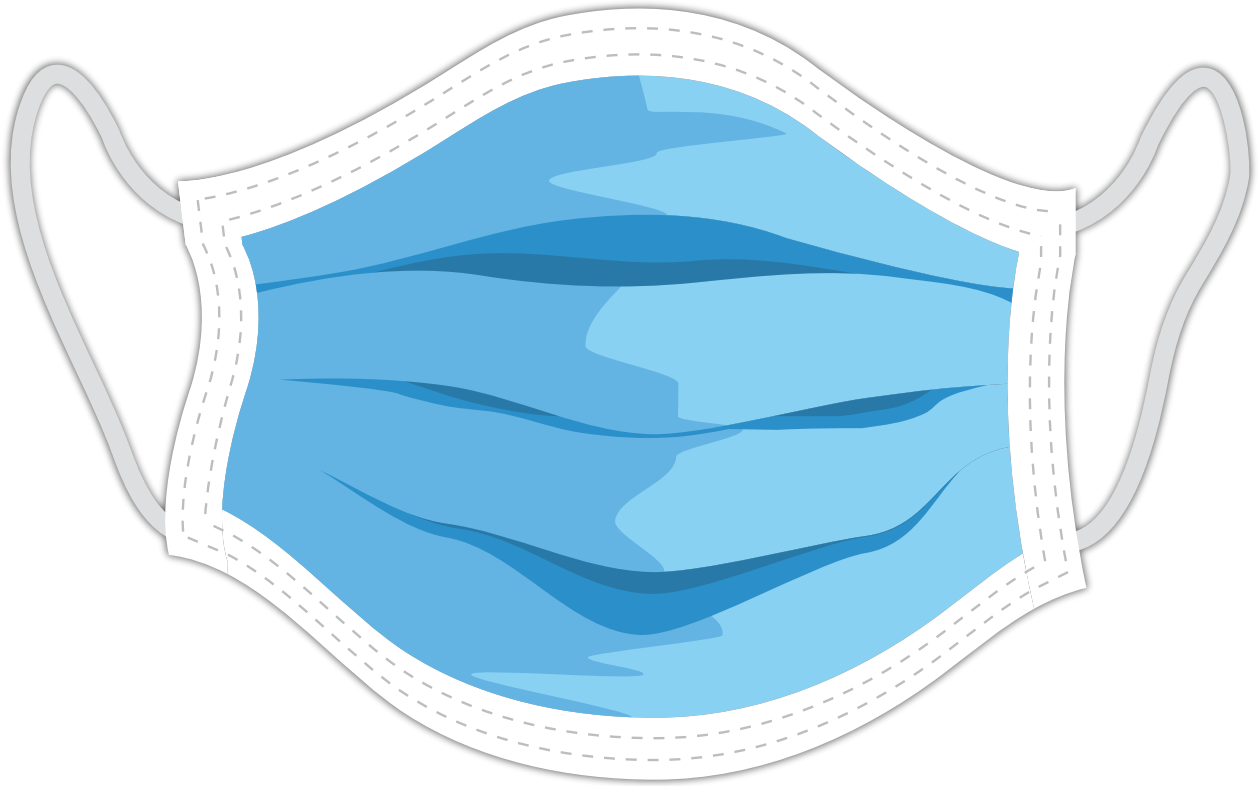
- Time of outbreak. An outbreak is when Los Angeles County Department of Public Health determines a cluster of three (3) or more laboratory confirmed cases of COVID-19 at the worksite within 14-day period meets worksite outbreak criteria

Employees will be provided with face coverings for voluntary use or upon request when:

- Working indoors
- In a vehicle with others

If you are experiencing COVID-19 symptoms, do not report to work in the office. Contact your supervisor or office administration within the first hour of your work-shift for further instructions.

MASKS STRONGLY RECOMMENDED



**Masks Prevent Spread
of COVID-19 and are
Strongly Recommended by Public Health.**

PREVENT COVID-19 SURGES